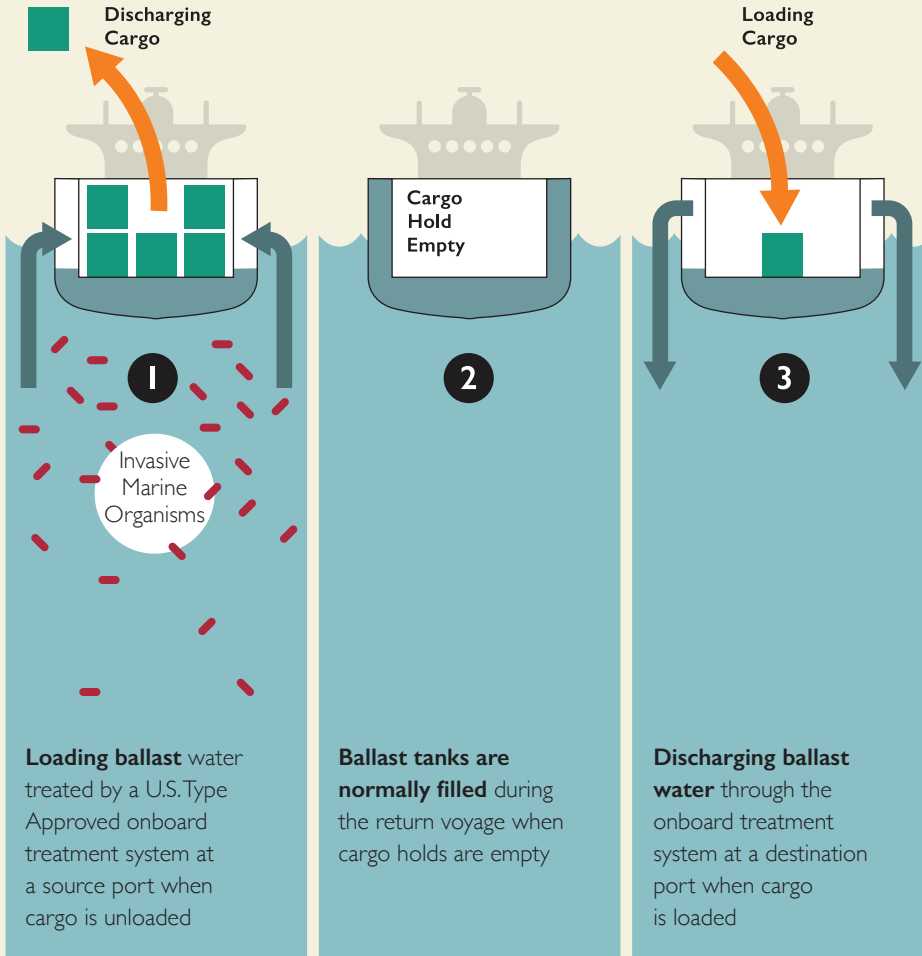


Vessel Ballasting Operations

- Ballast water is added to or discharged from cargo vessels to maintain stability.
- **U.S. DOT Volpe Center** experts lend key support to the **U.S. Coast Guard's** Ballast Water Management Program.



- **U.S. Type Approved onboard treatment systems** are now available to **prevent the spread of invasive marine organisms.**

- The Volpe Center assisted in the development of the U.S. Coast Guard's Final Rule on discharge standards.
- Technical experts at the Volpe Center are validating the specifications of manufacturer's models to ensure treatment system performance will be effective on a large scale.