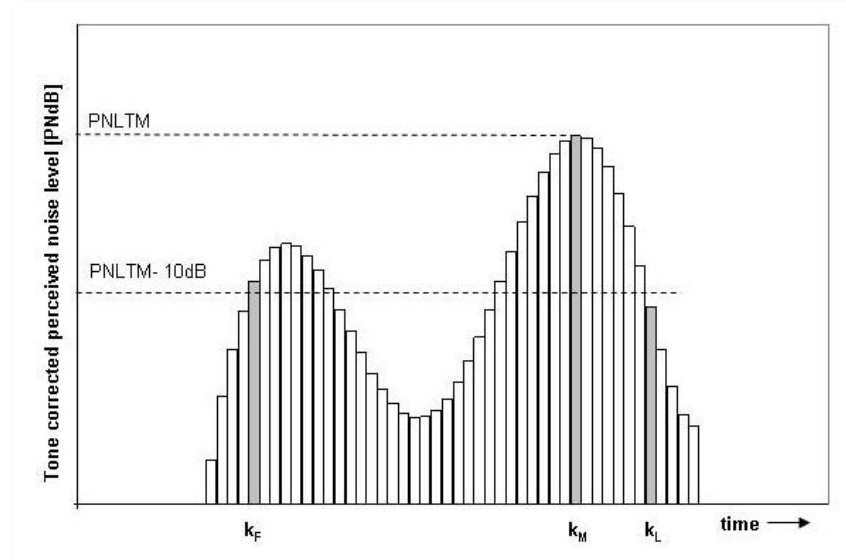


Annex 16 changes (Amdt. 10 – Sixth Edition): Calculation of EPNL - Noise Duration elements

- ❑ Introduced new terminology for concept of “Noise Duration” (i.e., period between start of first 10 dB-down record and end of last 10 dB-down record) over which PNLT levels are logarithmically summed to obtain EPNL
- ❑ Removed obsolete concept of “Duration Correction Factor”, which was cyclical in nature, and is not useful in EPNL calculation*.
- ❑ Improved guidance on identification of 10 dB-down points in PNLT history, and introduced new symbols for first and last 10 dB-down points: K_F and K_L .



- ❑ * NOTE: Duration Correction Factor can still be obtained by subtracting PNLTM from EPNL, if needed.